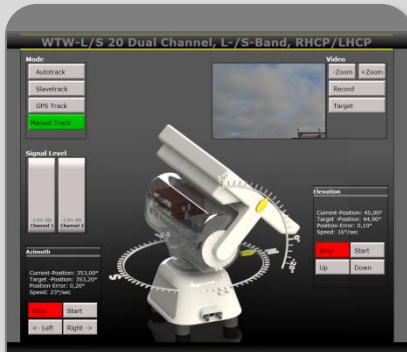




The portable light weight dual axis auto tracking antenna.



The WTW L/S/C Tracking Antennas are developed in according to the latest technology to fulfil compactness, last technology, low weight and high efficiency.



This is possible with more than 10 years experienced personal in developing robust and long-lasting mechanics and excellent RF features.

KEY FEATURES

- Weight: appr. 20 kg
- Dimension (Park Position El. 90°): appr. 20" x 16" x 23" (WxDxH)
- Dimension (Transport Position El. 0°): appr. 20" x 15" x 21.25" (WxDxH)
- Polarisation: RHCP und LHCP
- Mode:
 - Auto-, Slave-, Manual-Tracking
- Torque:
 - Az. max. 40 Nm
 - El. max. 50 Nm
- Speed:
 - Az. max. 90°/sec
 - El. max. 60°/sec
- Movement:
 - Az. unlimited (Slipping)
 - El. -5° up to 90°
- operational Windspeed: up to 65mph
- stowed: up to 100mph

Option:

- C-Band (Clip On)



The WTW Anlagenbau GmbH is a premium manufacturer for telemetry antennas using the latest technology combined with ultimate performance for **Airplane, Helicopter, Missile and Rocket** test on **Land or Water**.

Series WTW-L/S 20

Series WTW-L/S 20	
Reflector Size	20" x 16" (W x H)
Frequency Range	1400 MHz to 2400 MHz Optional C-Band
Gain	appr. 16 dBi @ 1435 MHz appr. 20 dBi @ 2300 MHz appr. 20 dBi @ 5200 MHz
3dB beam width	appr. 26.5° @ 1435 MHz appr. 16.2° @ 2350 MHz appr. 12.1° @ 5200 MHz
Velocity Azimuth	max. 90°/sec
Velocity Elevation	max. 60°/sec
Acceleration Azimuth	max. 90°/sec ²
Acceleration Elevation	max. 60°/sec ²
Output Torque (max. intermittent)	40 Nm
Elevation Travel	-5° to 90°
Azimuth Travel	unlimited
Power Requirement	appr. 150 W
Temperature	-20°C to +70°C
Humidity	0 to 100%
Windspeed	Up to 65mph
Dimension in Park Position (WxDxH)	20" x 16" x 23"

Options

Radom
Gimbel
Battery
Diesel Generator
Pedestal for Downconverter, Receiver, Dehydrator
Feet for mobile Application
Mobile Hydraulic Tower (up to 12m)

National / International Sales / Marketing:

Tel Data System GmbH

Phone: +49 (0) 81 21 – 41 01 18

Email: telemetrie@wtw-anlagenbau.de



WTW Anlagenbau GmbH

Gutenbergstrasse 3
26632 Ihlow-Riepe
Germany

Phone: +49 (0) 4928/914598-0

Fax: +49 (0) 4928/914598-9

Email: telemetrie@wtw-anlagenbau.de

Web: www.telemetrie-antenne.de